

S-cape™ 2MR hand control

OPERATION GUIDE



CONTENTS

S-cape™ 2MR Function	4
“J Box” Programming Procedure	5
Power Down Box Operation	5
S-cape™ 2MR Programming (<i>1 hand control - 1 bed</i>)	6
S-cape™ 2MR Programming (<i>2 hand controls - 1 bed</i>)	7
S-cape™ 2MR Programming (<i>1 hand control - 2 beds</i>)	8
S-cape™ 2MR Programming (<i>2 hand controls - 2 beds</i>)	9
S-cape™ 2MR Reprogramming (<i>separating 2 beds</i>)	10

S-CAPE™ 2MR FUNCTION

IMPORTANT INFORMATION

READ ADVISORY INFORMATION IN THE OWNERS MANUAL CAREFULLY BEFORE USING THIS PRODUCT. THE POTENTIAL FOR ELECTRICAL SHOCK EXISTS IF ELECTRICAL COMPONENTS ARE NOT INSTALLED OR OPERATED PROPERLY.

CUSTOM POSITION SET BUTTON
Press to capture any position or function (massage or wave) of the bed as a programmed position. Press the *custom position recall button* to return the bed to the custom programmed position.

TRANSMISSION INDICATOR LIGHT
Verifies a button is being pressed and data is being sent to the bed.

POSITION BUTTONS
The adjustable base is equipped with 3 factory preset positions. Press and release a button and the bed will automatically move to the preset position. To stop the bed while in motion, press and hold any button until the bed stops.

HEAD UP/DOWN BUTTON
Press and hold to raise or lower the head section.

FOOT UP/DOWN BUTTON
Press and hold to raise or lower the foot section.

LEVEL BUTTON
Press to return the bed to the flat position. *Note: to stop bed while in motion, press any button until bed movement stops.* Pressing this button will shut off the massagers.

CUSTOM POSITION RECALL BUTTON
Press to return the bed to the custom programmed position.

HEAD MASSAGE BUTTONS
Press and hold to increase or decrease head massage intensity.

FOOT MASSAGE BUTTONS
Press and hold to increase or decrease foot massage intensity.

HEAD MASSAGE ON/OFF BUTTON
Switches the head massage on or off. When switched on, the massage feature will automatically shut off after 30 minutes.

FOOT MASSAGE ON/OFF BUTTON
Switches the foot massage on or off. When switched on, the massage feature will automatically shut off after 30 minutes.

WAVE SPEED BUTTONS
Press and hold—after the head and/or foot massage, and the wave system have been activated—to increase or decrease the wave speed.

WAVE ON/OFF BUTTON
Press to activate or deactivate the wave vibration system.

NOTE

HAND CONTROL REQUIRES FOUR (4) AAA SIZE BATTERIES. TO CONSERVE BATTERY LIFE, THE TRANSMITTER TURNS OFF ALL FUNCTIONS WHEN ANY BUTTON IS PRESSED FOR MORE THAN 50 SECONDS.

"J BOX" PROGRAMMING PROCEDURE

"J BOX" PROGRAMMING

For adjustable beds equipped with "J box" only—no power down box.

When programming the hand control, unplug the adjustable bed electrical power cord. Wait 30 seconds, then plug the cord back in to the power source. This simple process automatically sets the bed to the program mode for 90 seconds. For convenience, use this procedure in lieu of pressing the *learn button* (located on the J box, mounted to the underside of the bed base frame).

At any point where "**press the learn button**" is designated, disconnecting and reconnecting the electrical power cord will achieve the same function. Note that this alternate programming feature is only applicable to beds without a power down box. Power down equipped adjustable beds require use of the *learn button* when programming the hand control.

POWER DOWN BOX OPERATION

In case of a power outage, press and hold the *learn button* on the power down box to lower the bed to the flat position (**FIGURE 1**).

This function is only for lowering the bed and will not operate the bed to any other position. The (2) 9 volt batteries should be replaced after this function is used.

In the event the power down feature does not work, check to make sure the (2) 9 volt batteries are good.

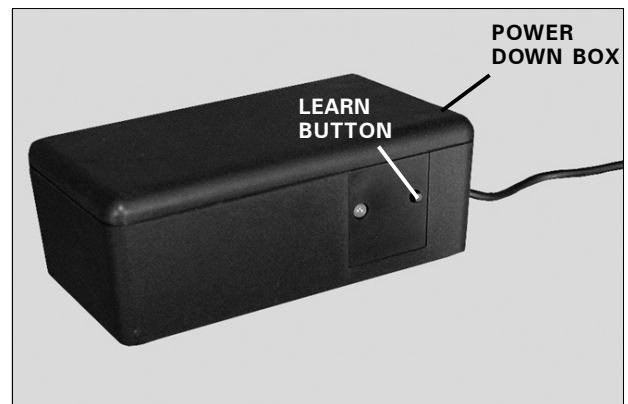


FIGURE 1: Power down box learn button.

S-CAPE™ 2MR PROGRAMMING 1 hand control - 1 bed

The two step procedure below is required to program 1 hand control to operate 1 bed. Before beginning, make certain the bed is plugged into a working grounded electrical outlet. *If programming fails, initiate the programming procedure a second time.*

STEP 1

The bed will be equipped with either a *power down box* or *J box* receiver unit (**FIGURE 2**). Locate the receiver unit for the bed and press the *learn button* for 1 second and release. *Note: If you experience difficulty locating or reaching the learn button on a J box equipped adjustable bed, refer to **J Box Programming** on page 5.*

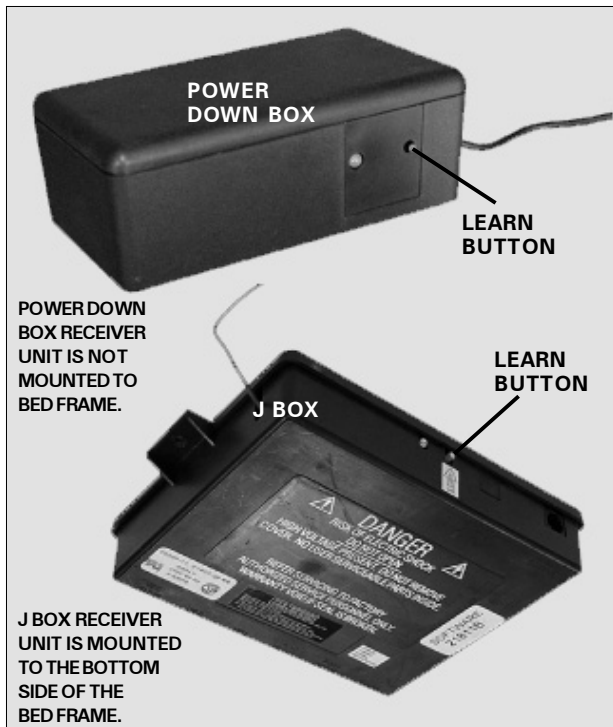
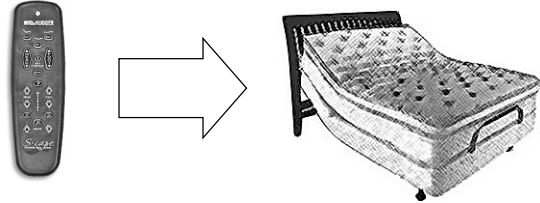


FIGURE 2: Power down box and J box receiver units.

STEP 2

On the hand control, simultaneously press and hold the *POS 1* and *head massage on/off* buttons (**FIGURE 3**). **The transmission indicator light will flash slowly and then flash rapidly to indicate programming mode.** Continue to hold for 5 seconds and then release the buttons.

One hand control is now programmed to operate one bed.

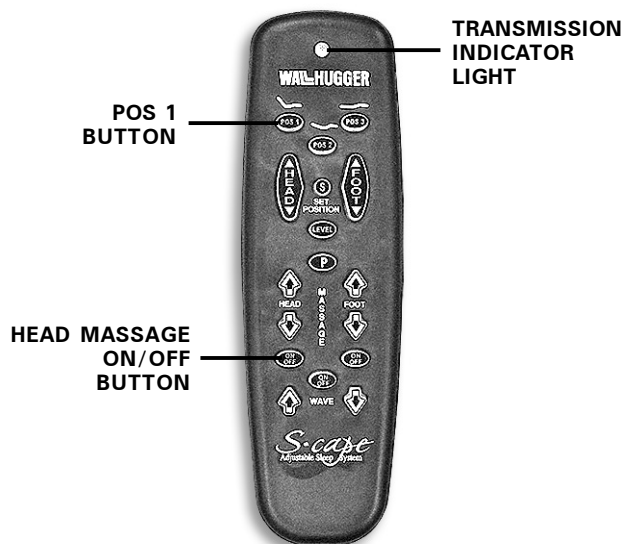


FIGURE 3

S-CAPE™ 2MR PROGRAMMING 2 hand controls - 1 bed

The three step procedure below is required to program 2 hand controls to operate 1 bed. Before beginning, make certain the bed is plugged into a working grounded electrical outlet. *If programming fails, initiate the programming procedure a second time.*

STEP 1

The bed will be equipped with either a *power down box* or *J box* receiver unit (**FIGURE 2**). Locate the receiver unit for the bed and press the *learn button* for 1 second and release. *Note: If you experience difficulty locating or reaching the learn button on a J box equipped adjustable bed, refer to **J Box Programming** on page 5.*

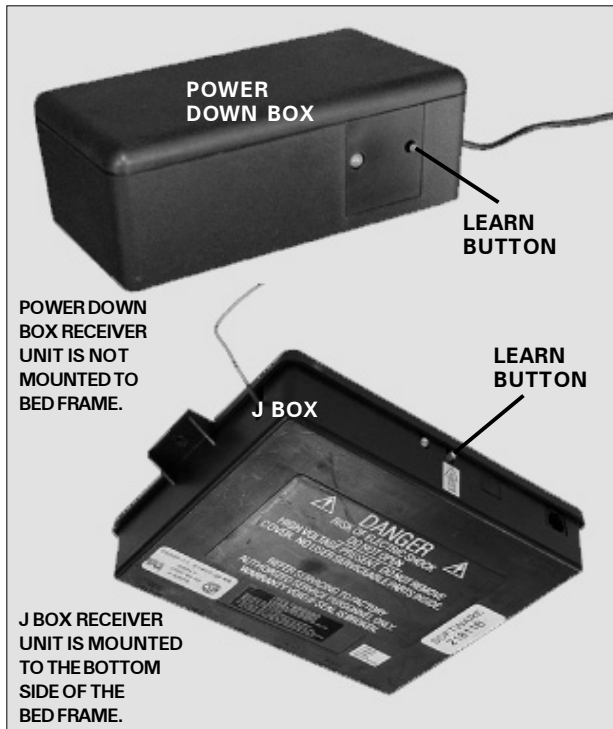


FIGURE 2: Power down box and J box receiver units.

STEP 2

On hand control 1, simultaneously press and hold the *POS 1* and the *head massage on/off* buttons (**FIGURE 3**). The **transmission indicator light will flash slowly and then flash rapidly to indicate programming mode**. Continue to hold for 5 seconds and then release the buttons.

STEP 3

Repeat Step 1 and Step 2 with hand control 2.

Two hand controls are now programmed to operate one bed.

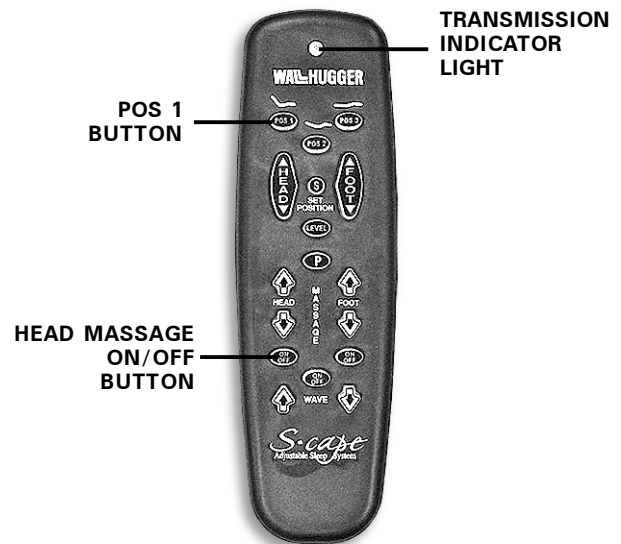
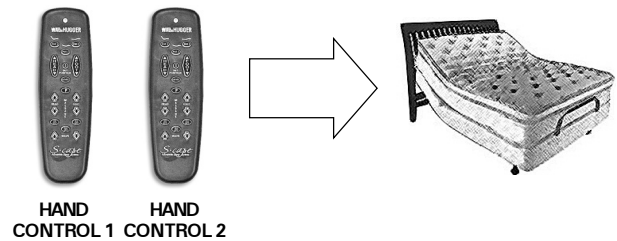


FIGURE 3

NOTE

OPERATE ONLY ONE (1) HAND CONTROL AT A TIME. OPERATING TWO (2) HAND CONTROLS AT THE SAME TIME WILL MOMENTARILY BLOCK BOTH RF SIGNALS AND PREVENT BOTH CONTROLS FROM FUNCTIONING.

S-CAPE™ 2MR PROGRAMMING 1 hand control - 2 beds

The three step procedure below is required to program 1 hand control to operate 2 beds. Before beginning, make certain the beds are plugged into a working grounded electrical outlet. *If programming fails, initiate the programming procedure a second time.*

STEP 1

The bed will be equipped with either a *power down box* or *J box* receiver unit (**FIGURE 2**). Locate the receiver unit for bed 1 and press the *learn button* for 1 second and release. *Note: If you experience difficulty locating or reaching the learn button on a J box equipped adjustable bed, refer to J Box Programming on page 5.*

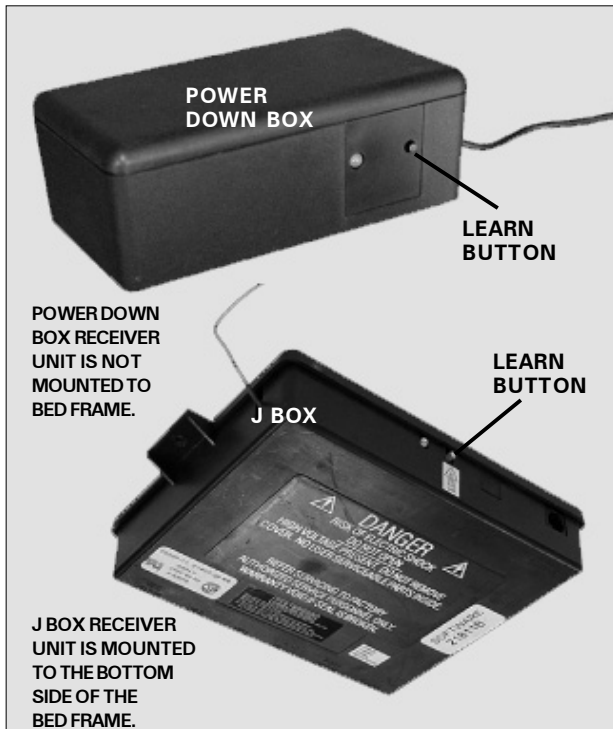


FIGURE 2: Power down box and J box receiver units.

STEP 2

On hand control 1, simultaneously press and hold the *POS 1* and the *head massage on/off* buttons (**FIGURE 3**). The **transmission indicator light will flash slowly and then flash rapidly to indicate programming mode**. Continue to hold for 5 seconds and then release the buttons.

STEP 3

Repeat Step 1 and Step 2 with bed 2.

One hand control is now programmed to operate two beds.

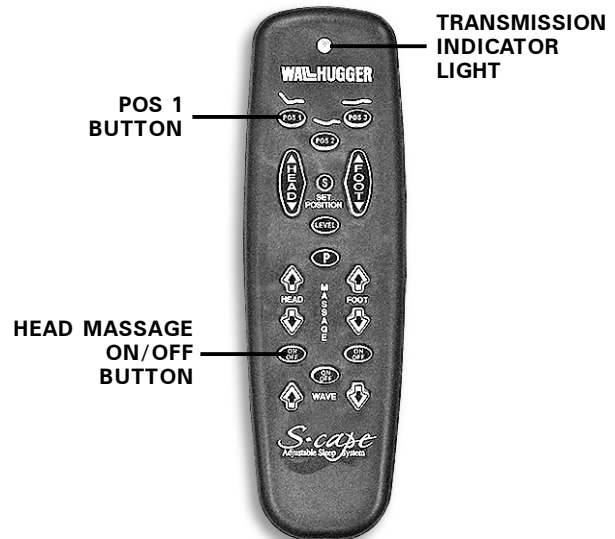
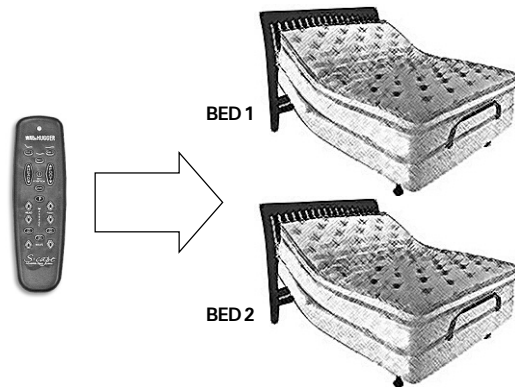


FIGURE 3

S-CAPE™ 2MR PROGRAMMING 2 hand controls - 2 beds

The six step procedure below is required to program 2 hand controls to operate 2 beds. Before beginning, make certain the beds are plugged into a working grounded electrical outlet. *If programming fails, initiate the programming procedure a second time.* **NOTE: OPERATE ONLY ONE (1) HAND CONTROL AT A TIME. OPERATING TWO (2) HAND CONTROLS AT THE SAME TIME WILL MOMENTARILY BLOCK BOTH RF SIGNALS AND PREVENT BOTH CONTROLS FROM FUNCTIONING.**

STEP 1

The bed will be equipped with either a *power down box* or *J box* receiver unit (**FIGURE 2**). Locate the receiver unit for bed 1 and press the *learn button* for 1 second and release. *Note: If you experience difficulty locating or reaching the learn button on a J box equipped adjustable bed, refer to J Box Programming on page 5.*

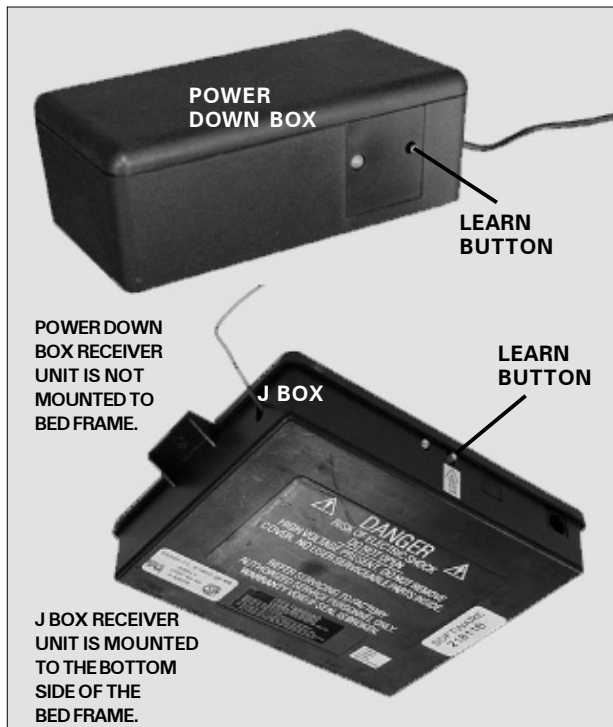


FIGURE 2: Power down box and J box receiver units.

STEP 2

On hand control 1, simultaneously press and hold the *POS 1* and the *head massage on/off* buttons (**FIGURE 3**). The **transmission indicator light will flash slowly and then flash rapidly to indicate programming mode.** Continue to hold for 5 seconds and then release the buttons.

STEP 3

Repeat Step 1 and Step 2 with hand control 2.

STEP 4

The bed will be equipped with either a *power down box* or *J box* (**FIGURE 2**). Locate the receiver unit for bed 2 and press the *learn button* for 1 second and release.

STEP 5

On hand control 1, simultaneously press and hold the *POS 1* and the *head massage on/off* buttons (**FIGURE 3**). The **transmission indicator light will flash slowly and then flash rapidly to indicate programming mode.** Continue to hold for 5 seconds and then release the buttons.

STEP 6

Repeat Step 4 and Step 5 with hand control 2.

Two hand controls are now programmed to operate two beds.

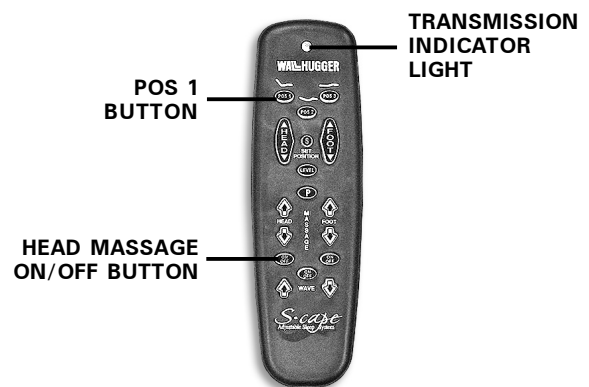
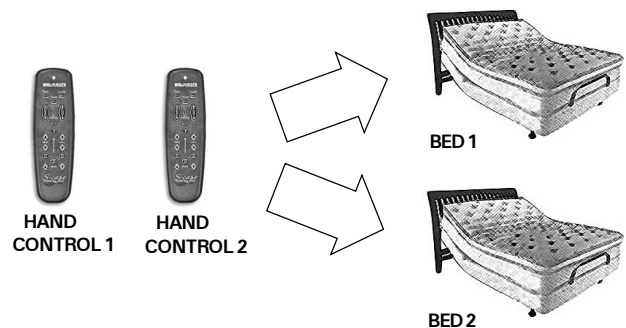


FIGURE 3

S-CAPE™ 2MR REPROGRAMMING *separating 2 beds*

The six step procedure below is required to separate 2 hand controls from operating 2 beds. One hand control per bed operation will result. Before beginning, make certain the beds are plugged into a working grounded electrical outlet. *If programming fails, initiate the programming procedure a second time.* **NOTE: OPERATE ONLY ONE (1) HAND CONTROL AT A TIME. OPERATING TWO (2) HAND CONTROLS AT THE SAME TIME WILL MOMENTARILY BLOCK BOTH RF SIGNALS AND PREVENT BOTH CONTROLS FROM FUNCTIONING.**

STEP 1

The bed will be equipped with either a *power down box* or *J box* receiver unit (**FIGURE 2**). Locate the receiver unit for bed 1 and press the *learn button* for 1 second and release. *Note: If you experience difficulty locating or reaching the learn button on a J box equipped adjustable bed, refer to J Box Programming on page 5.*

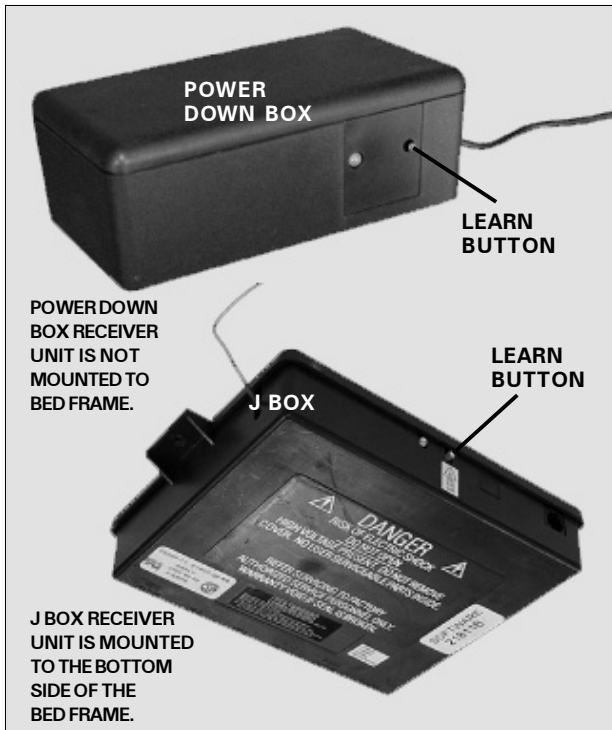


FIGURE 2: Power down box and J box receiver units.

STEP 2

On hand control 1, simultaneously press and hold the *POS 1* and the *head massage on/off buttons* (**FIGURE 3**). The transmission indicator light will *flash slowly* and then *flash rapidly* to indicate programming mode. Continue to hold for 5 seconds and then release the buttons.

STEP 3

Repeat Step 1 and Step 2 with hand control 1. **Note: wait 90 seconds before proceeding to Step 4.**

STEP 4

The bed will be equipped with either a *power down box* or *J box* (**FIGURE 2**). Locate the receiver unit for bed 2 and press the *learn button* for 1 second and release.

STEP 5

On hand control 2, simultaneously press and hold the *POS 1* and the *head massage on/off buttons* (**FIGURE 3**). The transmission indicator light will *flash slowly* and then *flash rapidly* to indicate programming mode. Continue to hold for 5 seconds and then release the buttons.

STEP 6

Repeat Step 4 and Step 5 with hand control 2.

Independent hand control operation is now restored (hand control 1 operating bed 1; hand control 2 operating bed 2).

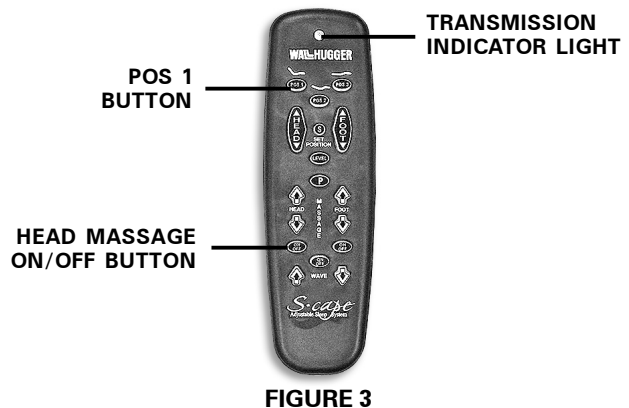
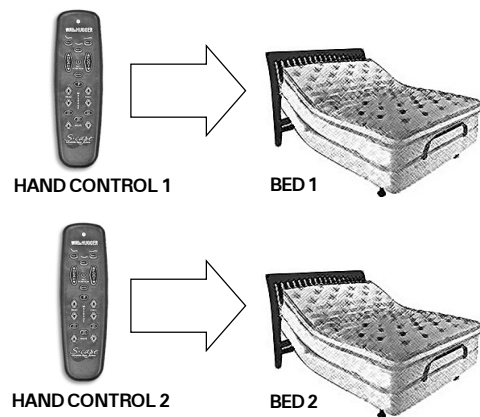


FIGURE 3

customer (care))

800.888.3078

For customer care online, email:
accustomerservice@leggett.com



Adjustables
by Leggett & Platt®

www.adjustablesbyleggett.com